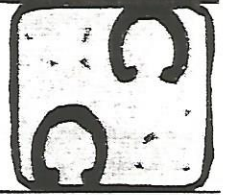


FOUR DEAD!



Vol X. No. 1

March 2001

Jonell Goss, Editor

208 642 2040

President's Message:



Hello to all of you and welcome to a new year. I hope that everybody made it through the holidays alright without breaking the bank. It has been a mild winter thus far here in the city of trees (Boise). The snowfall has been minimal in the valley as well as in the mountains. We could have used a little more snow in the mountains, but winter isn't over yet.

I'd like to start off and welcome everybody to a new season. Linda VanGorder has stepped down as the editor of the newsletter and Jonell Goss has now taken on the responsibilities. I would first like to thank Linda for the time and effort she has put into the newsletter and the amount of money she has saved the organization by doing it. I would like to welcome Jonell as our new editor and do look forward to working with her.

As all of you have probably noticed, there was not a newsletter sent out at the end of last season after the last tournament. The reasons for this was because there was not enough funds to warrant the publication. We are sorry for this but because of the lower turnouts to the tournaments we didn't have enough money to run it. This newsletter will be including some of last years results from different tournaments as well as news from the tournament directors meeting held last October. Our membership has continued to drop over the years, and if anybody has any ideas they would like to share on getting new pitchers into the organization we would love to hear them. New members should be the main focus this year or we may see some tournaments drop off of the schedule due to lack of entries, and we surely don't need that. I would like to ask all members to do what you can to increase our membership, new faces are always welcome.

Last October 28th in Challis we held a tournament directors meeting. Challis was the chosen site because it was the closest mid point of the state for directors to come for the meeting. Unfortunately we had a poor showing. Myself, Marge and Harry Chapin, and Lynn and Leon Johnson were the only people that came. We discussed several topics and will be putting some on the voting ballot to get your input. I would like to ask everybody (when filling out the ballot form) to please fill it out as soon as possible and send them back to me. Last years participation on the ballot form was very poor and I am asking that everybody please voice themselves on the forms, this is for all members not just for a few. The topics that we discussed were:

1. Going back to the Calendar year for counting sanctioned tournaments rather than the current system. Presently it is from state tournament to state tournament.
2. If new members join after August 1st, that person(s) would only need one sanctioned tournament to qualify for the state singles tournament for that year.
3. Moving Twin Falls into the Eastern portion of the state from its current position in the southwest.
4. Continue to donate one dollar from each entry to the "Four Dead!" or go to a subscription.

We also discussed having the sign up deadline for the State Singles Tournament only, on the Tuesday before the tournament rather than the current Thursday deadline. The reason for this, is to allow the tournament director (that year) to have a couple of extra days to prepare for the tournament, (ie, food, shirts, hats, etc).

I would also like to mention that this years World Tournament is being held in Hibbing, Minnesota. The deadline for registration is May 17th and the cost for all adult pitchers is \$100 and \$25 for any Juniors that wish

to participate. The registration form is on the NHPA web site or you can call me and I will send you a form. If anybody decides to go, I would like to know in advance.

See you on the courts,

Dave Spears, President

Greetings from SILVER VALLEY HORSESHOE CLUB!!!

Wintery greetings from the SILVER VALLEY HORSESHOE CLUB!!! Looking out my front window I have about 2 feet (not inches) of snow in my front yard. So are we ready to pitch horseshoes??? That's what the guys in the club are saying!!!

We will be hosting the STORMIN' NORMAN MEMORIAL TOURNEY on June 9th this year. It will be sanctioned singles; entry fee of \$11.00; classes may be mixed. Refreshments will be available. Start time at 9 a.m. Call to sign up by Thursday June 7th: Ken Ives at 784-0884 or 786-0851 OR Vicki McEnany at 682-3819.

We will also be having the SILVER VALLEY CLASSIC TOURNEY on August 11th and 12th. Saturday will be regular sanctioned singles; entry fee of \$11.00; classes may be mixed depending on number of entries with a start time of 9 a.m. On Sunday we want to try something different than the doubles we have had in the past. We will try a Half and Half Not Tournament. Some of you have pitched these in the past just for the fun of it, but we want to give it a try as a sanctioned tournament. It is much the same as a regular singles round-robin event except the payoff is \$\$\$\$\$\$. Each player starts with the same amount of money (your entry fee). As each game is played the losing player has to give the winner 1/2 of his money. This continues through the round robin and in the end you keep whatever money you have won. You would never go broke as you only give away half of what you have and you have the chance to knock off a top player at the end and get half of what he's attained. It's really a simple concept and we're hoping it will be fun. Entry fee for Sunday is also \$11.00; classes may be mixed; starting time of 9 a.m. Refreshments will be available both days. Saturday evening again we would like to do the potluck

since everyone has to eat anyway so bring your best dish!!! Call Ken Ives or Vicki McEnany at the above numbers by Thursday August 9th to sign up.

The club would also like to invite anyone who is interested in pitching in our league to come to the Kellogg City Park Memorial Horseshoe Courts any Tuesday evening around 6 p.m. We usually start practicing around the first of May and league will begin the first Tuesday in June. Cost is \$17.00 for your State and National dues. This entitles you to pitch all summer long (we normally pitch until mid-August). For more information on league pitching contact Vicki or Ken. Hope to see all of ya' this summer..... From SHIRLEY WATSON

News from POCATELLO club

Pocatello had its "Last Chance" Horseshoe Tournaments on August 19, 2000. The morning Tourney had 3 classes, 30', A, and B. The afternoon Tourney had 2 classes, 30' and A. A Double Round Robin was played and the winner got \$16 and a legend plate. The Class spreads were tight with the exception of **Don Moser**, and that class needed a Handicap. **Kara and Chester Whitworth** ran the day's events smoothly, and the *Idaho State Journal* ran a Pictured Article in the Sunday Sports Page. Good publicity for State Sanctioned Horseshoes. Pocatello's "Last Chance" Tournaments gives all Horseshoe Pitcher's a chance to qualify and to hone their skills for the following weekends, **Idaho State Singles Championship**. We invite everyone to attend next years event. My hat goes off to a "Day well Played."

A 12 gauge single barrel shotgun donated by Gary Johnston was raffled off to benefit Alec and Cayleigh. \$110 was raised and the winner of the shotgun was Chester Whitworth. The Idaho State Journal came out and did an article about the Last Chance Tournaments. A copy of the article is included in this newsletter.

Jim Price.

Pocatello LEAGUE

April 19th to June 7th

Gate City Spring League

10 week singles round robin

Contact Bobby Faulkner or Jim Price

208.238.5531

208.232.4566

or

208.233.3249

note: All Pocatello tournaments \$15

State Doubles tournament will be \$40 per team

CALDWELL LEAGUE

It is time to start our horseshoe league. Due to unsettled weather in April, we will start league on Monday, April 16, 2001 at 7:00 p.m. at Memorial Park in Caldwell. It will end on Monday, September 3, 2001.

We are sending a flyer along with our annual letter. If at all possible give the flyer to a friend, relative, or stranger. Maybe we can get some new members to join our league.

All league games will start at 7:00 p.m. until August 13th. On that night we will start at 6:30 p.m. due to shorter daylight. Try to be at least 15 minutes early so we can get started on time.

If possible bring a scorekeeper along for league games and for any tournaments you enter if you can. We ask that there be no alcoholic beverages on the courts at any time during league play or during any tournament.

Handicap tournament will be August 13th and 14th starting at 6:30 p.m. We will have (2) classes, there will be an A class and a B class. This tournament will be double elimination. To qualify for this tournament you must have played in at least (3) league nights.

To qualify for league money, for 1st, 2nd and 3rd league season, you must have played in at least (3) league nights. All games will start at 6:30 p.m. the first night, as we will start at 6:45 p.m. before we start. If you have any suggestions on how to make it the better, we would like to hear from you. Don't be afraid to speak up!

All tournaments will start at 9:00 a.m. Entry fees for all tournaments will be \$11.00. There will be no entry fee for juniors for league tournaments. **PRE REGISTER FOR ALL TOURNAMENTS.** The Caldwell league will be hosting (3) tournaments this season. First will be the Thompson Brother's Memorial, it will be held on Saturday, May 26, 2001. The next will be the Independence Day and that will be on Wednesday, July 4, 2001. Then, the Ralph Warthen Classic will be held on Saturday July 28, 2001. The entry fee for all three tournaments will be \$11.00 The Thompson Brother's Memorial and the Ralph Warthen Classic will be sanctioned tournaments. The Independence day or Fourth of July tournament will be a fun tournament.

To enter any of the tree tournaments you may contact either one of the tournament directors:

DIRECTORS FOR THE YEAR 2001 ARE:

- ❖ Joe Campbell 208-454-3907
- ❖ Sophia Com 208-454-2217

HOPE TO SEE YOU ON THE COURTS...AND GOOD PITCHING!!!!

Joe Campbell

UPCOMING TOURNAMENTS:

Ed Fix Memorial

Saturday May 5th at Julia Davis Park

Starting time is 9:30

Cost is \$11.00

Refreshments for donations

Mixed class with possible handicap

Contact: David Spears @ 342-5190

email: Ringone@micron.net <mailto:ringone@micron.net>

Dave's Wood Works Open

Saturday June 30th at Julia Davis Park

Starting time is 9:00

Cost is \$20.00

Score keeping is 50 cents / game

Refreshments in morning and lunch in afternoon

Separate classes if possible

No handicap if possible

Contact: David Spears @ 342-5190

Email: ringone@micron.net <mailto:ringone@micron.net>

Boise Classic

Sunday July 1st at Julia Davis Park

Starting time is: 9:00

Cost is \$11.00

Score keeping is 25 cents/game

Possible mixed classes

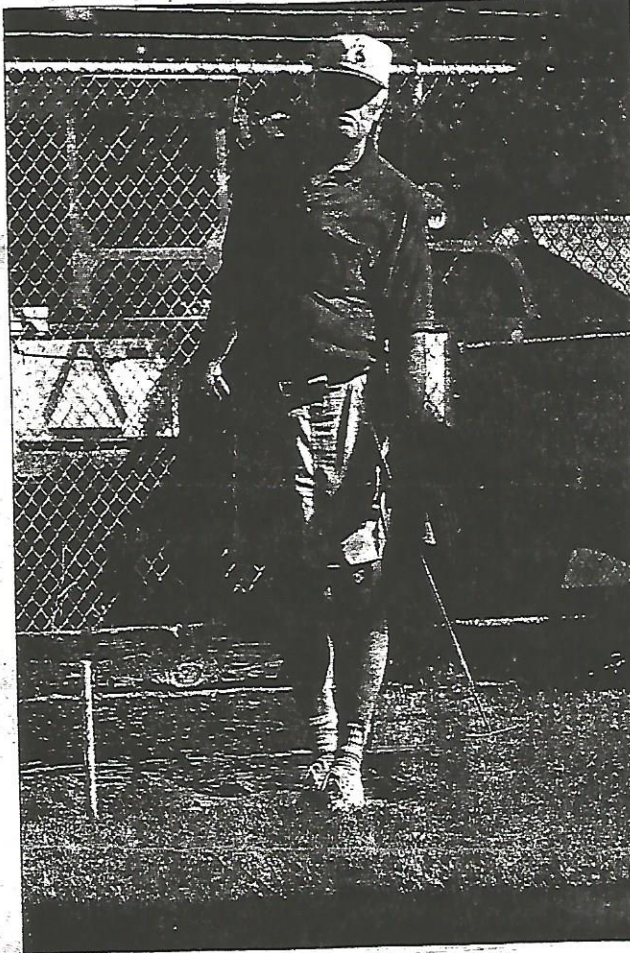
Possible handicap

Contact: David Spears @ 342-5190

email: ringone@micron.net <mailto:ringone@micron.net>

Editor: Jonell Goss
11574 Highway 95 Payette Idaho 83661

LEFT: Bill McAughey keeps a close eye on the horseshoe that he pitched at the National Horseshoe Pitchers Association Last Chance Tournament at Ross Park Saturday morning. RIGHT: A horseshoe slams into the ground sending dirt flying away.



Journal photo by Bruce Twitchell

Horseshoe pitchers make the most of 'Last Chance'

By Sean Ellis
Journal Sports Editor

POCATELLO — Warming up before the afternoon flight of the Last Chance Qualifying Tournament began at the Ross Park horseshoe pits, Bobby Faulkner explained the technique that helped him win Saturday's morning flight.

"I call it the 'Tennessee Flip,'" said Faulkner, who grew up in the Volunteer state and recently moved to Pocatello. "No one in Idaho seems to use it so I think I have an advantage."

Faulkner, a three-time junior champion in Tennessee, continued his explanation of the difference between a Tennessee and Idaho flip, his expression unchanged.

"You see, in Idaho the horse is not on the shoe," he shoots, letting out a giant laugh and clearly amused by the reporter who's just been had.



When close counts Sports C1



The tournament is the last local one Pocatellans can use to qualify for next week's state championships in Caldwell. Competitors have to compete in at least two sanctioned tournaments to qualify for state.

About 10 locals will be competing at state.

Pitching, as it's called, is still the domain of unique country personalities like Faulkner, who grew up tossing horseshoes in his backyard, and was a state junior champion at age 13.

But it also draws various other groups, attracted by its simple roots and the camaraderie it creates: All of the dozen or so pitchers gathered at Ross Park Saturday had a different story of how they got started, but they all share the same love of the sport.

Take Chester Whitworth, who also spent countless hours pitching in his back yard as a kid. But unlike Faulkner, who took up the sport as a rite of passage in the eastern corner of Tennessee, Whitworth began pitching for a totally different reason.

"I was grounded a lot when I was younger," he admits. "I would just sit around the yard a lot, so what are you going to do? So I stuck a stake in the back yard. That's all I did when I was grounded, so I got good at it."

Whitworth has placed first in every division at the state tournament except A, the highest level.

Then there's Don Moser, who competes in the 70 and over division and lives and breathes horseshoes. Moser is a multiple state champion and won the afternoon flight Saturday.

Moser, who has competed in the world tournament and is one of the top players in his age group in the nation, has been known to hit ringers on an incredible 70 percent of his shots at tournaments.

Top younger pros hit about 80 percent, Whitworth said.

"He's sort of a local hero," said Kara Whitworth, Chester's wife, who organized the Last Chance tournament.

Moser lives for The Main Event, an annual national tournament held in a 32-pit facility in Courtside, Ariz. The two-week tournament attracts hundreds of people from all over the nation.

The tournament also attracts scores of seniors and

gives Moser a chance to mingle with, and meet, fellow competitors his own age.

The camaraderie, Moser said, is the backbone of the sport.

"It's sure a good, friendly sport, and you meet people from all over," he said. "And it doesn't cost very much. You can do it anywhere. Just put a peg in the ground and you can play anywhere."

"Most of the people who play horseshoes are really good people," Kara Whitworth adds. "Some of these guys really like to see each other every weekend."

About 200 pitchers compete in the bar leagues in town, which are divided into seven divisions based on talent. But Chester Whitworth said there are at least dozens of others who pitch just for fun.

Camaraderie and fun aside, the players are clearly there to win and each one seems to have his or her technique down to an art form.

Faulkner's "Tennessee Flip" — the serious version — is thrown with a thumb on the grip side of the shoe, with the grip facing up.

By not holding the grip facing down, he explained, "I have more control and am more consistent."

9/25/2000
from
Drew
Speers

BOISE FALL ROUNDUP RESULTS

	<u>A-CLASS</u>	W/L	HG	%
1 ST	CLANCY WEBB	5/0	82.10	67.7
2 ND	GARY OPPER	4/1	66.67	55.77
3 RD	GARY KOLLMANN	3/2	52.17	50.00

	<u>B-CLASS</u>	W/L	HG	%
1 ST	RODNEY PICKERING	6/2	48.00	39.25
2 ND	TOM GOSS	4/3	56.00	41.14
3 RD	SOFIA CORN	4/3	44.00	34.28

THESE 3 PEOPLE WERE TIED AT 4-2 AT THE END OF REGULATION PITCHING AND HAD A PLAYOFF WITH RODNEY TAKING FIRST.

FALL ROUNDUP BOISE

SANCTIONED TOURNAMENT NUMBER 08-00-021
09/23/00

SPECIAL DIVISION		CLASS A	W-L	H/G	Rs	S/P	PERCENT
1st	CLARENCE WEBB	ID 80063	5-0	82.14%	122	180	67.77%
2nd	GARY OPPER	ID 80249	4-1	66.67%	116	208	55.76%
3rd	GARY KOLLMANN	ID 80086	3-2	52.17%	116	232	50.00%
4th	RALPH WARTHEN	ID 80015	2-3	47.50%	96	228	42.10%
5th	DAVID SPEARS	ID 80042	1-4	48.00%	101	242	41.73%
6th	JOE CAMPBELL	ID 80014	0-5	50.00%	70	206	33.98%

SPECIAL DIVISION		CLASS B	W-L	H/G	Rs	S/P	PERCENT
1st #	RODNEY PICKERING	ID 80196	6-2	48.00%	157	400	39.25%
2nd *	TOM GOSS	ID 80259	4-3	56.00%	144	350	41.14%
3rd *	SOFIA CORN	ID 80052	4-3	44.00%	120	350	34.28%
4th **	DON MANWILL	ID 80105	3-3	42.00%	110	304	36.18%
5th **	ALLEN LEE	ID 80040	3-3	46.00%	98	300	32.66%
6th	GENE TARR	ID 80116	2-4	32.00%	69	300	23.00%
7th	TODD GOSS	ID 80107	1-5	24.00%	48	300	16.00%

(# INDICATES A PLAYOFF FOR 1st PLACE - MATCHED SETS OF STARS DENOTE TIES)

SILVER VALLEY CLASSIC KELLOGG

SANCTIONED TOURNAMENT NUMBER 08-00-014
08/12/00

COMBINED		CLASS A	W-L	H/G	Rs	S/P	PERCENT
1st #	WILLIAM RUST	ID 80118	7-1	65.60%	202	372	54.30%
2nd	VICKI MCENANY	ID 80067	6-2	57.90%	173	384	45.05%
3rd *	CHARLES AULT	ID 80120	5-2	69.40%	187	324	57.71%
4th *	JERRY BENGTSON	ID 80033	5-2	55.00%	161	350	46.00%
5th **	JESSE LYDA	ID 80018	2-5	56.80%	152	340	44.70%
6th **	VEY ALLEN	WA 10132	2-5	44.60%	148	362	40.88%
7th ***	DEAN CURRY	ID 80021	1-6	40.50%	99	304	32.56%
8th ***	SOFIA CORN	ID 80052	1-6	45.40%	95	292	32.53%

COMBINED		CLASS B	W-L	H/G	Rs	S/P	PERCENT
1st	MIKE ZAHN	ID 80066	6-1	39.10%	114	342	33.33%
2nd *	OWEN RANDALL	ID 80190	5-2	42.00%	117	338	34.61%
3rd *	MONTY MCLAUGHLIN	WA 10260	5-2	37.50%	99	326	30.36%
4th **	RAY KALLIS	MT 115024	3<<-3<<	34.00%	97	342	28.36%
5th **	CARLENA SHOVE	ID 80045	3<<-3<<	30.40%	90	342	26.31%
6th ***	TIM STEPHENS	ID 80062	2-5	44.00%	106	342	30.99%
7th ***	RODNEY PICKERING	ID 80196	2-5	40.90%	86	310	27.74%
8th	DARWIN PLATZ	WA 10045	1-6	44.10%	90	318	28.30%

COMBINED		CLASS C	W-L	H/G	Rs	S/P	PERCENT
1st	CHRIS WORTH	WA 10208	6-1	36.80%	82	334	24.55%
2nd *	CAROL DAMMERALL	WA 10371	5-2	36.30%	96	330	29.09%
3rd *	KEVIN WATSON	ID 80031	5-2	39.10%	82	334	24.55%
4th	DON SHOVE	ID 80041	4-3	30.00%	80	346	23.12%
5th	HAROLD LEWIS	ID 80221	3<<-3<<	25.00%	70	344	20.34%
6th	ROSS WATSON	WA 100048	2<<-4<<	25.00%	60	330	18.18%
7th	TERRY BURNHAM	ID 80079	2-5	30.00%	69	344	20.05%

COMBINED		CLASS D	W-L	H/G	Rs	S/P	PERCENT
1st	KEN IVES	ID 80144	7-0	39.50%	75	322	23.29%
2nd	ERIC STEPHENS	ID 80258	5-2	28.00%	77	350	22.00%
3rd *	GARY BALLENSKY	ID 80201	4-3	24.00%	68	350	19.42%
4th *	JULES STRONGBOW	ID	4-3	21.70%	56	346	16.18%
5th *	DEBRA ZAHN	ID 80000	4-3	35.30%	53	334	15.86%
6th	MILLARD EDWARDS	WA 10257	3-4	16.00%	42	338	12.42%
7th	JULIE HANSON	ID 80020	1-6	6.00%	14	334	4.19%
8th	OWEN RUST	ID 80000	0-7	14.00%	24	330	7.27%

COEUR D' ALENE OPEN

SANCTIONED TOURNAMENT NUMBER 08-00-008
07/09/00

		COMBINED	-	CLASS A	W-L	H/G	Rs	S/P	PERCENT
1st	VEY ALLEN	WA		10132	6-2	60.00%	184	374	49.19%
2nd	WILLIAM RUST	ID		80118	5-3	58.70%	197	392	50.25%
3rd *	JOE WOLF	WA		10143	3-5	52.40%	167	368	45.38%
4th *	VICKI MCENANY	ID		80067	3-5	58.90%	149	368	40.48%
5th *	OTTO BRENECKE	ID		80026	3-5	44.40%	149	382	39.00%
		COMBINED	-	CLASS B	W-L	H/G	Rs	S/P	PERCENT
1st	DEAN CURRY	ID		80021	7-1	53.30%	162	350	46.28%
2nd	OWEN RANDALL	ID		80190	6-2	42.80%	163	448	36.38%
3rd	HONS RASSMUSSEN	ID			4-4	35.70%	156	422	36.96%
4th	MIKE ZAHN	ID		80066	2-6	44.40%	133	430	30.93%
5th	ERNIE AUSTIN	WA		100361	1-7	42.80%	117	402	29.10%
		COMBINED	-	CLASS C	W-L	H/G	Rs	S/P	PERCENT
1st	DON SHOVE	ID		80041	5-1	35.00%	58	228	25.43%
2nd *	CARLENA SHOVE	ID		80045	3-3	35.00%	59	238	24.78%
3rd *	DARWIN PLATZ	WA		10045	3-3	30.00%	55	240	22.91%
4th	HAROLD LEWIS	ID		80221	1-5	25.00%	39	226	17.25%
		COMBINED	-	CLASS D	W-L	H/G	Rs	S/P	PERCENT
1st	ERIC STEPHENS	ID		80258	5-1	27.80%	48	236	20.33%
2nd	DEBRA ZAHN	ID		80000	4-2	18.70%	42	248	16.93%
3rd	ELZYA JORDEN	ID			3-3	25.00%	44	234	18.80%
4th	OWEN RUST	ID		80000	0-6	13.00%	19	230	8.26%

(# INDICATES A PLAYOFF FOR 1st PLACE - MATCHED SETS OF STARS DENOTE TIES)

WARREN STUTZMAN MEMORIAL RUPERT

SANCTIONED TOURNAMENT NUMBER 08-00-009
07/15/00

		40' PITCHERS	-	CLASS A	W-L	H/G	Rs	S/P	PERCENT
1st #	TOM GOSS	ID		80259	6-3	46.00%	166	450	36.88%
2nd	CHARLES AULT	ID		80120	5-4	54.00%	209	450	46.44%
3rd *	LYNN JOHNS	UT		90043	4-4	52.00%	165	400	41.25%
4th *	ALLEN LEE	ID		80040	4-4	44.00%	136	400	34.00%
5th	RODNEY PICKERING	ID		80196	2-6	52.00%	129	400	32.25%
		40' PITCHERS	-	CLASS B	W-L	H/G	Rs	S/P	PERCENT
1st	CON MOSER	ID		80115	6-0	34.00%	90	300	30.00%
2nd	LEWIS BROCK	ID		80150	3-3	42.00%	89	304	29.27%
3rd	HENRY REID	ID		80016	2-4	14.00%	41	308	13.31%
4th	JOHN WARREN	ID		80037	1-5	16.00%	30	308	9.74%
		30' PITCHERS	-	CLASS A	W-L	H/G	Rs	S/P	PERCENT
1st	DEAN VALENTINE	ID		80232	7-1	58.00%	191	400	47.75%
2nd	DON MOSER	ID		80056	6-2	66.00%	245	400	61.25%
3rd	MONT LEWIS	ID		80180	4-4	70.00%	215	400	53.75%
4th	LEON JOHNSON	ID		80181	3-5	46.00%	168	400	42.00%
5th	DUANE ARCHIBALD	UT		90042	0-8	32.00%	92	400	23.00%
		30' PITCHERS	-	CLASS B	W-L	H/G	Rs	S/P	PERCENT
1st	ALMA CLARK	ID		80192	5-0	50.00%	105	250	42.00%
2nd	KEITH THOMAS	ID		80183	4-1	44.00%	93	250	37.20%
3rd *	KEITH LEWIS	ID		80233	2-3	38.00%	77	250	30.80%
4th *	LYNN JOHNSON	ID		80124	2-3	34.00%	64	250	25.60%
5th *	DON MANWILL	ID		80105	2-3	30.00%	63	250	25.20%
6th	VIRGINIA MANWILL	ID		80106	0-5	20.00%	46	250	18.40%

(# INDICATES A PLAYOFF FOR 1st PLACE - MATCHED SETS OF STARS DENOTE TIES)

IDAHO STATE CHAMPIONSHIP CALDWELL

SANCTIONED TOURNAMENT NUMBER 08-00-017
08/25/00

COMBINED WOMEN - CLASS A		W-L	H/G	Rs	S/P	PERCENT
1st	LINDA VANGORDER ID 80093	5-0	56.00%	136	250	54.40%
2nd	SOFIA CORN ID 80052	4-1	44.00%	85	250	34.00%
3rd *	LINDA PICKERING ID 80075	2-3	46.00%	98	250	39.20%
4th *	TERI OPPER ID 80000	2-3	38.00%	69	250	27.60%
5th *	DEBBIE VULK ID 80138	2-3	38.00%	64	250	25.60%
6th	VIRGINIA MANWILL ID 80106	0-5	24.00%	43	250	17.20%

40' PITCHERS - CLASS A		W-L	H/G	Rs	S/P	PERCENT
1st #	GARY KOLLMANN ID 80086	10-1	87.50%	304	546	55.67%
2nd	CHARLES AULT ID 80120	9-2	62.00%	286	514	55.64%
3rd	GARY OPPER ID 80249	7-3	63.00%	266	484	54.95%
4th *	WILLIAM RUST ID 80118	5-5	65.63%	221	418	52.87%
5th *	HARRY CHAPIN ID 80134	5-5	55.26%	216	458	47.16%
6th *	JESSE LYDA ID 80018	5-5	54.76%	199	448	44.41%
7th **	JOE CAMPBELL ID 80014	4-6	50.00%	264	556	47.48%
8th **	DAVID SPEARS ID 80042	4-6	56.00%	225	480	46.87%
9th **	CLYDE MARQUEZ ID 80111	4-6	60.71%	228	510	44.70%
10th	GEORGE SASZ ID 80051	2-8	52.00%	147	408	36.02%
11th	TOM GOSS ID 80259	1-9	47.92%	210	498	42.16%

PLAY OFF

40' PITCHERS - CLASS B		W-L	H/G	Rs	S/P	PERCENT
1st #	RODNEY PICKERING ID 80196	7-1	44.00%	147	404	36.38%
2nd	DOUG PALMER ID 80049	6-2	44.00%	142	400	35.50%
3rd	BOBBY FAULKNER ID	4-3	44.00%	118	350	33.71%
4th *	CHARLIE MARQUEZ ID 80112	3-4	44.00%	119	350	34.00%
5th *	MIKE ZAHN ID 80066	3-4	40.00%	95	350	27.14%
6th **	WARREN GLAHN ID 80057	2-5	40.00%	106	350	30.28%
7th **	OTTO BRENNECKE ID 80026	2-5	40.00%	106	354	29.94%
8th **	TRAVIS PICKERING ID 80110	2-5	38.00%	85	350	24.28%

40' PITCHERS - CLASS C		W-L	H/G	Rs	S/P	PERCENT
1st #	CHESTER WHITWORTH ID 80131	6-1	44.00%	115	350	32.85%
2nd	RON WILLIS ID 80199	5-2	44.00%	116	350	33.14%
3rd	GENE TARR ID 80116	4-2	38.00%	104	300	34.66%
4th	BILL MCAUGHEY ID 80191	3-3	38.00%	94	300	31.33%
5th	KENT WHITWORTH ID 80073	2-4	30.00%	74	300	24.66%
6th *	JAMES VANGORDER ID 80094	1-5	24.00%	45	300	15.00%
7th *	JIM SANER ID 80136	1-5	26.00%	42	300	14.00%

30' PITCHERS - CLASS A		W-L	H/G	Rs	S/P	PERCENT
1st	DON MOSER ID 80056	5-0	76.00%	168	250	67.20%
2nd	CLARENCE WEBB ID 80063	4-1	76.00%	168	250	67.20%
3rd	DEAN VALENTINE ID 80232	3-2	66.00%	133	250	53.20%
4th	RALPH WARTHEN ID 80015	2-3	70.00%	136	250	54.40%
5th	LEON JOHNSON ID 80181	1-4	50.00%	106	250	42.40%
6th	ALMA CLARK ID 80192	0-5	46.00%	89	250	35.60%

30' PITCHERS - CLASS B		W-L	H/G	Rs	S/P	PERCENT
1st	DON MANWILL ID 80105	5-1	46.00%	122	300	40.66%
2nd	KEITH LEWIS ID 80233	4-2	56.00%	128	300	42.66%
3rd	VERN TIESZEN ID 80036	2-4	48.00%	112	300	37.33%
4th	LYNN JOHNSON ID 80124	1-5	34.00%	94	300	31.33%

(# INDICATES A PLAYOFF FOR 1st PLACE - MATCHED SETS OF STARS DENOTE TIES)

RALPH WARTHEN CLASSIC CALDWELL

SANCTIONED TOURNAMENT NUMBER 08-00-011
07/29/00

C O M B I N E D		- CLASS A		W-L	H/G	Rs	S/P	PERCENT
1st	LINDA VANGORDER	ID	80093	6-1	68.00%	191	350	54.57%
2nd	CLARENCE WEBB	ID	80063	5-2	78.00%	221	354	62.42%
3rd *	GARY KOLLMANN	ID	80086	4-3	62.00%	198	350	56.57%
4th *	GARY OPPER	ID	80249	4-3	62.00%	190	350	54.28%
5th **	CECIL MCINDOO	ID	80009	3-4	60.00%	169	350	48.28%
6th **	HARRY CHAPIN	ID	80134	3-4	56.00%	167	350	47.71%
7th	DEAN VALENTINE	ID	80232	2-5	61.00%	194	354	54.80%
8th	RALPH WARTHEN	ID	80015	1-6	50.00%	166	350	47.42%

C O M B I N E D		- CLASS B		W-L	H/G	Rs	S/P	PERCENT
1st	JOE CAMPBELL	ID	80014	4-1	62.00%	128	250	51.20%
2nd *	ALMA CLARK	ID	80192	3-2	56.00%	112	250	44.80%
3rd *	GEORGE SASZ	ID	80051	3-2	52.00%	104	250	41.60%
4th *	LINDA PICKERING	ID	80075	3-2	48.00%	100	250	40.00%
5th	RODNEY PICKERING	ID	80196	2-3	46.00%	96	250	38.40%
6th	SOFIA CORN	ID	80052	0-5	34.00%	78	250	31.20%

C O M B I N E D		- CLASS C		W-L	H/G	Rs	S/P	PERCENT
1st	LARRY TARR	ID	80005	6-0	44.00%	103	300	34.33%
2nd	DON MANWILL	ID	80105	5-1	56.00%	132	300	44.00%
3rd	TRAVIS PICKERING	ID	80110	4-2	46.00%	87	300	29.00%
4th *	GENE TARR	ID	80116	2-4	44.00%	92	300	30.66%
5th *	TERI OPPER	ID	80000	2-4	32.00%	69	304	22.69%
6th **	JAMES VANGORDER	ID	80094	1-5	30.00%	59	304	19.40%
7th **	JIM SANER	ID	80136	1-5	18.00%	49	300	16.33%

(# INDICATES A PLAYOFF FOR 1st PLACE - MATCHED SETS OF STARS DENOTE TIES)

FALL ROUNDUP BOISE

SANCTIONED TOURNAMENT NUMBER 08-00-021
09/23/00

S P E C I A L D I V I S I O N		- CLASS A		W-L	H/G	Rs	S/P	PERCENT
1st	CLARENCE WEBB	ID	80063	5-0	82.14%	122	180	67.77%
2nd	GARY OPPER	ID	80249	4-1	66.67%	116	208	55.76%
3rd	GARY KOLLMANN	ID	80086	3-2	52.17%	116	232	50.00%
4th	RALPH WARTHEN	ID	80015	2-3	47.50%	96	228	42.10%
5th	DAVID SPEARS	ID	80042	1-4	48.00%	101	242	41.73%
6th	JOE CAMPBELL	ID	80014	0-5	50.00%	70	206	33.98%

S P E C I A L D I V I S I O N		- CLASS B		W-L	H/G	Rs	S/P	PERCENT
1st #	RODNEY PICKERING	ID	80196	6-2	48.00%	157	400	39.25%
2nd *	TOM GOSS	ID	80259	4-3	56.00%	144	350	41.14%
3rd *	SOFIA CORN	ID	80052	4-3	44.00%	120	350	34.28%
4th **	DON MANWILL	ID	80105	3-3	42.00%	110	304	36.18%
5th **	ALLEN LEE	ID	80040	3-3	46.00%	98	300	32.66%
6th	GENE TARR	ID	80116	2-4	32.00%	69	300	23.00%
7th	TODD GOSS	ID	80107	1-5	24.00%	48	300	16.00%

(# INDICATES A PLAYOFF FOR 1st PLACE - MATCHED SETS OF STARS DENOTE TIES)

BOISE CLASSIC BOISE

SANCTIONED TOURNAMENT NUMBER 08-00-007
07/09/00

SPECIAL DIVISION				A - CLASS A				
				W-L	H/G	Rs	S/P	PERCENT
1st	GARY OPPER	ID	80249	5-0	66.00%	148	262	56.48%
2nd	DON MOSER	ID	80056	4-1	70.00%	165	250	66.00%
3rd	GARY KOLLMANN	ID	80086	3-2	64.00%	149	266	56.01%
4th	CLYDE MARQUEZ	ID	80111	2-3	56.00%	122	256	47.65%
5th	CLARENCE WEBB	ID	80063	1-4	64.00%	154	250	61.60%
6th	JESSE LYDA	ID	80018	0-5	42.00%	105	250	42.00%

SPECIAL DIVISION				A - CLASS B				
				W-L	H/G	Rs	S/P	PERCENT
1st	SOFIA CORN	ID	80052	6-1	62.00%	140	312	44.87%
2nd *	DOUG PALMER	ID	80049	5-2	48.10%	137	364	37.63%
3rd *	RODNEY PICKERING	ID	80196	5-2	52.50%	114	322	35.40%
4th	GEORGE SASZ	ID	80051	4-3	47.20%	116	296	39.18%
5th **	JOE CAMPBELL	ID	80014	3-4	42.20%	115	314	36.62%
6th **	TOM GOSS	ID	80259	3-4	39.70%	128	358	35.75%
7th	WARREN GLAHN	ID	80057	2-5	39.30%	110	318	34.59%

SPECIAL DIVISION				A - CLASS C				
				W-L	H/G	Rs	S/P	PERCENT
1st	CHARLIE MARQUEZ	ID	80112	5-0	37.50%	86	266	32.33%
2nd	KENT WHITWORTH	ID	80073	4-1	34.40%	85	286	29.72%
3rd	VERN TIESZEN	ID	80036	3-2	40.50%	81	270	30.00%
4th	BILL MCAUGHEY	ID	80191	2-3	30.90%	67	254	26.37%
5th	TODD GOSS	ID	80107	1-4	23.10%	61	274	22.26%
6th	RON WILLIS	ID	80199	0-5	24.20%	47	278	16.90%

SPECIAL DIVISION				A - CLASS D				
				W-L	H/G	Rs	S/P	PERCENT
1st	TERI OPPER	ID	80000	4-1	26.00%	52	240	21.66%
2nd *	JIM NEWTON	ID	80127	3-2	32.00%	58	222	26.12%
3rd *	DEBBIE VULK	ID	80138	3-2	32.60%	53	214	24.76%
4th *	JAMES VANGORDER	ID	80094	3-2	23.90%	59	298	19.79%
5th	ANITA H MABBUTT	ID	80058	2-3	30.00%	46	238	19.32%

(# INDICATES A PLAYOFF FOR 1st PLACE - MATCHED SETS OF STARS DENOTE TIES)

DAVES WOODWORK OPEN BOISE

SANCTIONED TOURNAMENT NUMBER 08-00-006
07/08/00

		40' PITCHERS		-	CLASS A	W-L	H/G	Rs	S/P	PERCENT
1st		GARY OPPER	ID	80249	6-1	67.80%	146	278	52.51%
2nd	*	CLYDE MARQUEZ	ID	80111	5-2	54.80%	141	302	46.68%
3rd	*	GARY KOLLMANN	ID	80086	5-2	55.50%	140	300	46.66%
4th	*	JESSE LYDA	ID	80018	5-2	50.00%	133	308	43.18%
5th		GEORGE SASZ	ID	80051	4-3	66.70%	126	294	42.85%
6th		DAVID SPEARS	ID	80042	2-5	50.00%	88	238	36.97%
7th		RODNEY PICKERING	ID	80196	1-6	38.20%	82	272	30.14%

		40' PITCHERS		-	CLASS B	W-L	H/G	Rs	S/P	PERCENT
1st	#	TOM GOSS	ID	80259	5-1	52.30%	115	314	36.62%
2nd		WARREN GLAHN	ID	80057	4-2	46.40%	82	286	28.67%
3rd	*	DOUG PALMER	ID	80049	2-3	31.80%	77	282	27.30%
4th	*	GENE TARR	ID	80116	2-3	28.90%	66	278	23.74%
5th	*	CHARLIE MARQUEZ	ID	80112	2-3	27.80%	63	276	22.82%
6th		TRAVIS PICKERING	ID	80110	1-4	30.40%	53	248	21.37%

		40' PITCHERS		-	CLASS C	W-L	H/G	Rs	S/P	PERCENT
1st		BILL MCAUGHEY	ID	80191	5-0	50.00%	81	222	36.48%
2nd		TODD GOSS	ID	80107	4-1	30.60%	72	286	25.17%
3rd		KENT WHITWORTH	ID	80073	3-2	52.90%	66	212	31.13%
4th		JIM NEWTON	ID	80127	2-3	38.20%	59	238	24.78%
5th		JAMES VANGORDER	ID	80094	1-4	24.20%	40	240	16.66%
6th		HENRY REID	ID	80016	0-5	19.20%	22	226	9.73%

		30' PITCHERS		-	CLASS A	W-L	H/G	Rs	S/P	PERCENT
1st		DON MOSER	ID	80056	5-1	76.00%	199	300	66.33%
2nd	*	CLARENCE WEBB	ID	80063	3-3	76.00%	202	300	67.33%
3rd	*	RALPH WARTHEN	ID	80015	3-3	68.00%	171	300	57.00%
4th		LINDA VANGORDER	ID	80093	1-5	52.00%	129	300	43.00%

		30' PITCHERS		-	CLASS B	W-L	H/G	Rs	S/P	PERCENT
1st	#	SOFIA CORN	ID	80052	9-1	52.00%	199	450	44.22%
2nd		LINDA PICKERING	ID	80075	8-2	50.00%	172	450	38.22%
3rd	*	ALMA CLARK	ID	80192	6-3	46.00%	135	400	33.75%
4th	*	TERI OPPER	ID	80000	6-3	36.00%	94	350	26.85%
5th		DON MANWILL	ID	80105	5-4	38.00%	118	400	29.50%
6th	**	VERN TIESZEN	ID	80036	4-5	34.00%	92	350	26.28%
7th	**	DEBBIE VULK	ID	80138	4-5	32.00%	104	400	26.00%
8th		ANITA H MABBUTT	ID	80058	3-6	16.00%	42	400	10.50%
9th		EILEEN SIEBERT	ID	80143	1-8	18.00%	34	300	11.33%

(# INDICATES A PLAYOFF FOR 1st PLACE - MATCHED SETS OF STARS DENOTE TIES)

NATSTATS for IDAHO dated 03/28/01

NHPA#	Name		State	Div	%	#Tourn
80085	Sonny	Abad	ID		21.72	2
80055	Cliff	Amsbaugh	ID		45.76	7
80120	Charles	Ault	ID		52.95	3
80201	Gary	Ballensky	ID		20.79	3
80033	Jerry	Bengtson	ID		42.36	8
80060	Ike	Bews	ID		17.00	2
80026	Otto	Brennecke	ID		38.71	13
80150	Lewis	Brock	ID		29.27	1
80079	Terry	Burnham	ID		26.40	4
80014	Joe	Campbell	ID		46.84	7
80134	Harry	Chapin	ID		46.03	5
80192	Alma	Clark	ID	3	41.11	7
80052	Sofia	Corn	ID	W	41.27	8
80021	Dean	Curry	ID		41.77	9
80200	Gary	Curtis	ID		31.25	1
80266	Verlyn	Dunn	ID	3	35.83	2
80089	Bobby	Faulkner	ID		32.75	3
80170	Edmund W	George	ID		20.50	1
80057	Warren	Glahn	ID		32.12	4
80107	Todd	Goss	ID	B	23.10	4
80259	Tom	Goss	ID		41.83	8
80020	Julie	Hanson	ID	W	4.20	2
80047	Don	Heidt	ID		8.27	1
80006	Cliff	Holcomb	ID	3	27.63	3
80137	Howard	Homme	ID	3	45.73	2
80144	Ken	Ives	ID		21.52	3
80019	Bill	Jensen	ID		30.80	1
80181	Leon	Johnson	ID	3	45.61	6
80124	Lynn	Johnson	ID	3	30.81	5
80086	Gary	Kollmann	ID		57.00	9
80040	Allen	Lee	ID		32.84	3
80221	Harold	Lewis	ID		21.07	8
80233	Keith	Lewis	ID	3	37.04	8
80180	Monte	Lewis	ID	3	56.68	7
80081	Ron	Lloyd	ID		18.57	2
80029	Ellery	Lovell	ID		7.93	2
80030	Willa	Lunceford	ID		18.00	1
80012	Brian	Luoma	ID	B	9.07	2
80018	Jesse	Lyda	ID		46.48	8
80058	Anita H	Mabbutt	ID	W	14.60	3
80105	Don	Manwill	ID	3	40.26	9
80106	Virginia	Manwill	ID	W	21.28	4
80112	Charlie	Marquez	ID		32.29	4
80111	Clyde	Marquez	ID		48.31	4
80191	Bill	McAughey	ID		32.89	5
80068	Kyle	McEnany	ID	B	24.02	3
80067	Vicki	McEnany	ID	W	43.85	4
80009	Cecil	McIndoo	ID	3	48.61	2
80115	Con	Moser	ID		29.33	3
80056	Don	Moser	ID	3	66.52	14
80127	Jim	Newton	ID		22.25	4
80249	Gary	Opper	ID		61.32	16
80011	Teri	Opper	ID	W	25.66	8
80049	Doug	Palmer	ID		35.97	4
80075	Linda	Pickering	ID	W	38.94	7
80196	Rodney	Pickering	ID		38.64	11
80110	Travis	Pickering	ID		32.36	7
80046	Jim	Price	ID		31.90	2
80088	Joe	Purjue	ID	3	31.00	1
80190	Owen	Randall	ID		36.94	6
80016	Henry	Reid	ID	3	25.13	3

80010	Annette	Ross	ID	W	23.20	1
80074	Owen	Rust	ID		7.36	3
80118	William	Rust	ID		52.75	7
80136	Jim	Saner	ID		16.80	3
80051	George	Sasz	ID		43.69	7
80061	Del	Schmeling	ID		23.40	1
80045	Carlana	Shove	ID	W	30.68	8
80237	Don	Shove	ID		26.01	8
80143	Eileen	Siebert	ID	W	13.22	2
80042	David	Spears	ID		43.99	7
80258	Eric	Stephens	ID	B	22.23	4
80062	Tim	Stephens	ID		33.49	4
80028	Jules	Strongbow	ID		16.57	3
80116	Gene	Tarr	ID		31.01	7
80005	Larry	Tarr	ID		33.49	2
80183	Keith	Thomas	ID	3	37.20	1
80036	Vern	Tieszen	ID	3	32.16	6
80232	Dean	Valentine	ID	3	53.20	7
80094	James	VanGorder	ID		20.62	5
80093	Linda	VanGorder	ID	W	51.66	4
80138	Debbie	Vulk	ID	W	25.57	4
80037	John	Warren	ID		9.04	2
80015	Ralph	Warthen	ID	3	54.21	7
80031	Kevin	Watson	ID	B	24.05	3
80063	Clarence	Webb	ID	3	70.64	7
80131	Chester	Whitworth	ID		31.55	3
80073	Kent	Whitworth	ID		31.56	6
80199	Doug 'Ron'	Willis	ID		22.73	3
80064	Debra	Zahn	ID	W	14.82	3
80066	Mike	Zahn	ID		34.36	11
80126	Bob	Zausch	ID		24.50	1

Side 2 of 1

REASON FOR CHANGE. To identify both state tournaments, eliminate the confusion of how the state is divided up, and name the sites that are sanctioned to hold state tournaments. This also puts Jerome and Twin Falls in the Eastern section. This also identifies the rotation of the State Singles Tournament.

YES _____ NO _____ ABSTAIN _____

ADDITION TO BYLAWS, ARTICLE XI

ARTICLE XI

- 3) It shall be the Tournament Directors discretion to hold the State Singles Tournament on Labor Day weekend, or the weekend before Labor Day.

REASON FOR ADDITION OF ARTICLE. To eliminate the yearly vote on what weekend The State Singles Tournament is to be held on, and let the Tournament Director choose which weekend would work best for him/her.

YES _____ NO _____ ABSTAIN _____

NEW ITEMS:

1. Should funds continue to be collected from each tournament to support the 4-dead newsletter, or shall we go to a subscription?

Funds _____ Subscription _____

Please return ballot form ASAP to:

David Spears

4319 Kootenai St.

Boise, Id. 83705

Proposed bylaw(s) for amendment Side 1 of 1

Article VII (original bylaw)

2) To qualify to pitch in the State Singles Tournament and or the State Doubles Tournament a pitcher must have pitched in a minimum of two (2) sanctioned tournaments from State Tournament to State Tournament.

Proposed amendment would read

2. To qualify to pitch in the State Singles Tournament and or the State Doubles Tournament a Pitcher must have pitched in a minimum of two (2) sanctioned tournaments during the calendar year.

REASON FOR CHANGE. To put all records recorded back into the calendar year.

YES _____ NO _____ ABSTAIN _____

NEW BYLAW

2A) Any new members joining the Association after August first (1st) must pitch in at least one (1) sanctioned tournament to qualify for the State Singles Tournament.

YES _____ NO _____ ABSTAIN _____

Article XI (original bylaw)

1. Members in good standing, attending a meeting held at the annual Idaho State Tournament, shall select the site for the following years Idaho State Tournament by a simple majority vote. The state is divided into three sections: North, East, and West. The North section is the area West of U.S. Highway 93 South from the Montana border to Stanley and North from a line drawn due west from Stanley to the Oregon Border. The East section is that area East of U.S. 93. (Exception: Jerome is included in the East section.) The West section is that area West of U.S. 93 and North from the southern border to the line West of Stanley. If possible, tournament sites will be alternated between the northern, eastern and western sections of the state.

Proposed amendment would read:

1. Members in good standing, attending the meeting held at the annual Idaho State Singles Tournament, shall select the site for the following years Idaho State Singles and Doubles Tournaments by a simple majority vote. The state is divided up into three sections, North, East, and West. The North section will include, Coeur D'Alene, Kellogg, Salmon, and Challis. The West section will include, Boise, Nampa, Caldwell, Mountain Home and Fairfield,. The East section will include, Jerome, Twin Falls, Rupert, Pocatello, and Idaho Falls. If possible, tournament sites will be alternated between the Northern, Western, and Eastern sections of the state. Site selection will rotate counter clock wise for the State Singles Tournament.

(over)

2001 TOURNAMENTS

Date	Tournament Name	City	Sanctioned?	start time: Name	Address	CONTACT: Phone
May 5	Gate City Open	Pocatello	Non-Sanctioned	9 a.m.	Jim Price	208.232.4566
May 12	Ed Fix Memorial	Boise	Non-Sanctioned	9:30 a.m.	David Spears	208.342.5190
May 19 & 20	Jackpot Open	Jackpot	Non-Sanctioned		Harry & Marge Chapin	208.733.2156
May 20	Elmer Curry Classic	Pocatello	Sanctioned	9 a.m.	Tim Stephens	North 1356 Post Falls ID 83854
May 26	Thompson Brothers Memorial	Caldwell	Sanctioned	9 a.m.	Joe Campbell	208.454.3907
June 2	Jerome Open	Twin Falls	Sanctioned		Sophia Corn	208.454.2217
June 2	Twin Spin (afternoon)	Twin Falls	Sanctioned		Harry & Marge Chapin	208.733.2156
June 9	Stormin' Norman	Kellogg	Sanctioned		Harry & Marge Chapin	208.733.2156
June 9	Portneuf Pitch-out / Singles / mixed	Pocatello	Sanctioned	9 a.m.	Vicki McEnany PO Box 770 Pinehurst ID 83850	208.682.3819
June 9					Ken Ives	208.784.0884 208.786.0851
June 9					Bobby Faulkner	bfaulkner@premiertechnology.cc 208.238.5531
June 9					bobby@bobbysteam.com	208.233-3249
June 23	Louie Piva Memorial	Challis	Non-Sanctioned		Leon Johnson	208.879.2440
June 30	Dave's Woodwork	Boise	Sanctioned	9 a.m.	David Spears	208.342.5190
July 1	Boise Classic	Boise	Sanctioned	9 a.m.	David Spears	208.342.5190
July 4	Independence Day	Caldwell	Non-Sanctioned	9 a.m.	Joe Campbell	208.454.3907
July 14 & 15	Warren Stutzman Memorial	Rupert	Sanctioned		Sophia Corn	208.454.2217
July 15					Buck Walker	208.436.6231
July 15	Coeur d'Alene Open	Coeur d'Alene	Sanctioned		Bonnie Stutzman	208.532.4452
July 28	Ralph Warthen Classic	Caldwell	Sanctioned	9 a.m.	Tim Stephens	208.773.0435
August 11	Idaho State Doubles	Pocatello	Sanctioned	9 a.m.	Joe Campbell	208.454.3907
August 12	Idaho State Doubles	Pocatello	Sanctioned	9 a.m.	Sophia Corn	208.454.2217
August 11	Silver Valley Singles	Kellogg	Sanctioned	9 a.m.	Jim Price	208.232.4566
August 12	Silver Valley have or Have Not	Kellogg	Sanctioned		Jim Price	208.232.4566
August 24,25,26	Idaho Sate Singles	Rupert	Sanctioned		Vicki McEnany PO Box 770 Pinehurst ID 83850	208.682.3819
Sept 15 & 16	Jackpot	Jackpot	Non-Sanctioned		Ken Ives	208.784.0884 208.786.0851
Sept 22nd	Southeastern Idaho Championships/SINGLES	Pocatello	Non-Sanctioned	9 a.m.	Buck Walker	208.436.6231
Sept 29	Fall Roundup	Boise	Sanctioned		Bonnie Stutzman	208.532.4452
					Harry & Marge Chapin	208.733.2156
					Bobby Faulkner (See above)	208.238.5531
					Dave Spears	208.342.5190

Mail to Ralph Ruebel (statistician)
 2638 4th Avenue East
 Twin Falls ID 83301

Jonell Goss, Editor
Four Dead!
11574 Highway 95
Payette ID 83661



TO:

